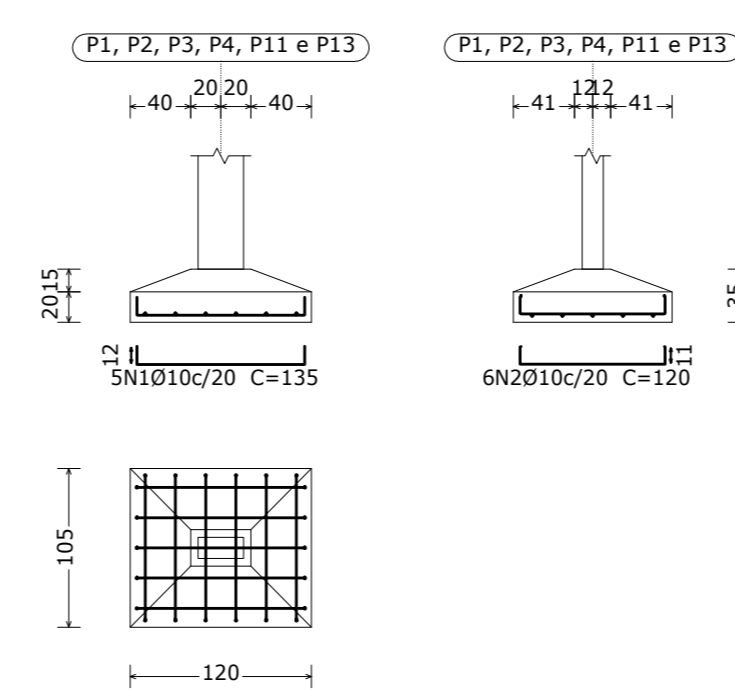


PLANTA DE FORMAS - Fundação

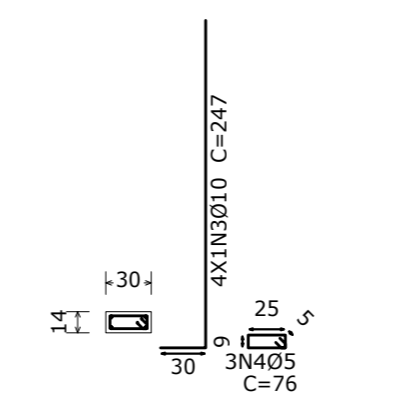
Escala: 1/50



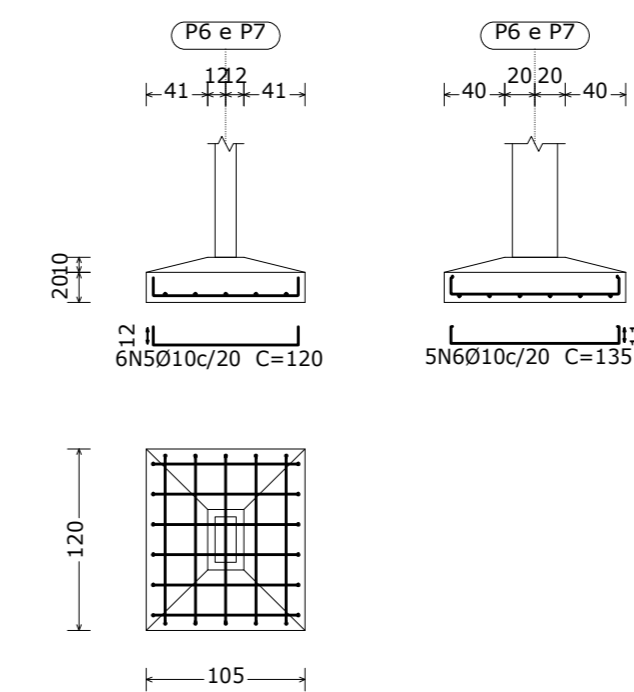
P1, P2, P3, P4, P11 e P13



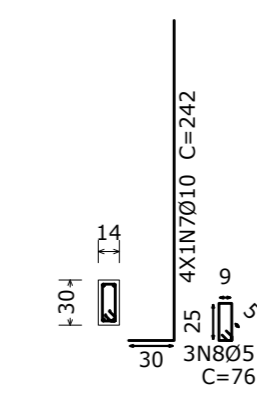
P1, P2, P3, P4, P11 e P13



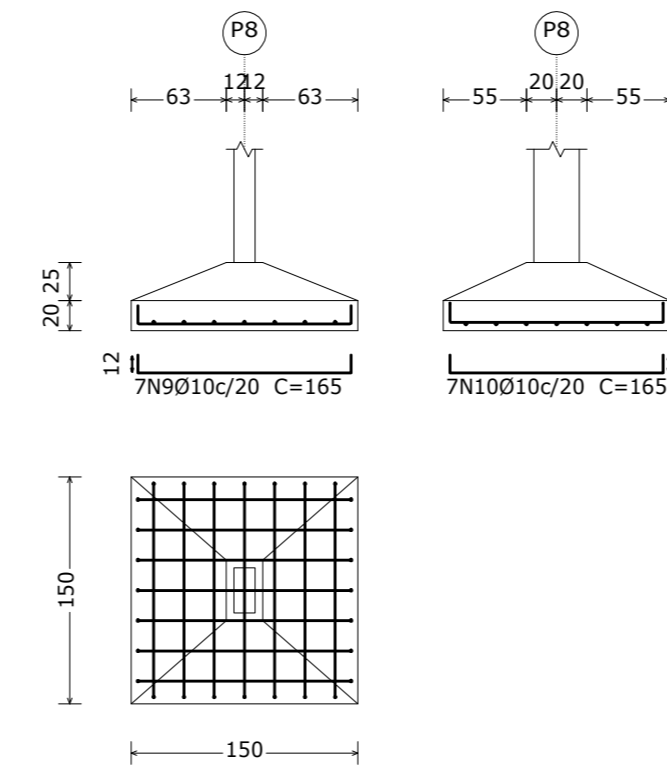
P6 e P7



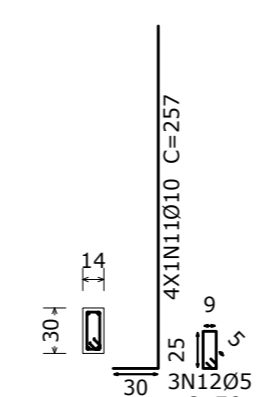
P6 e P7



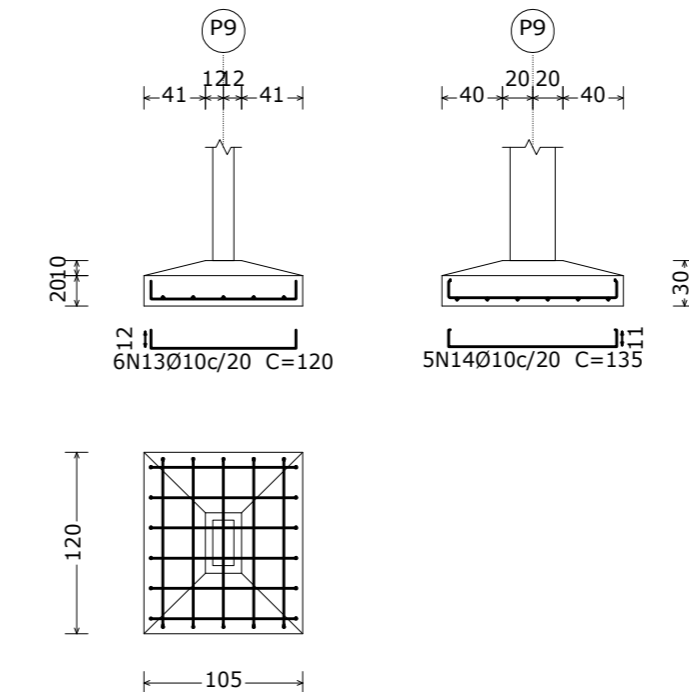
P8



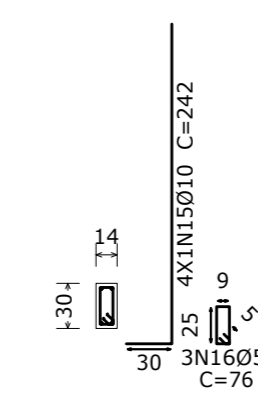
P8



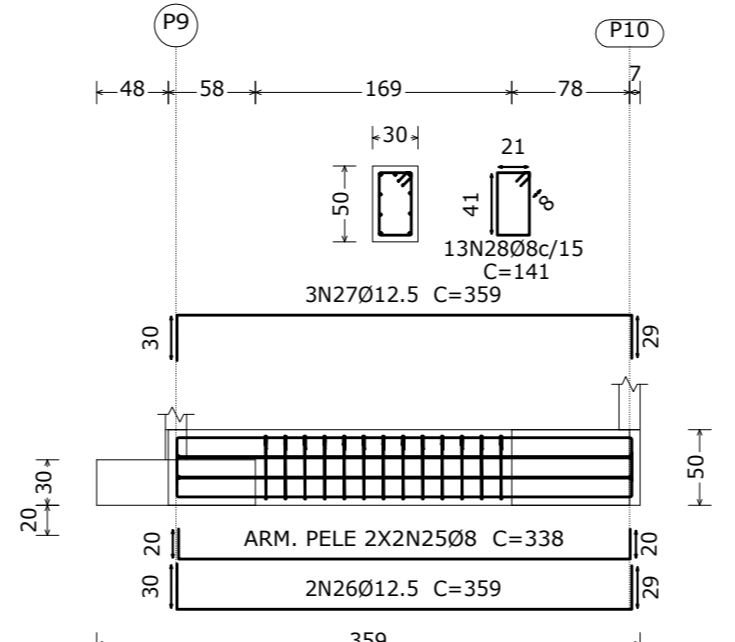
P9



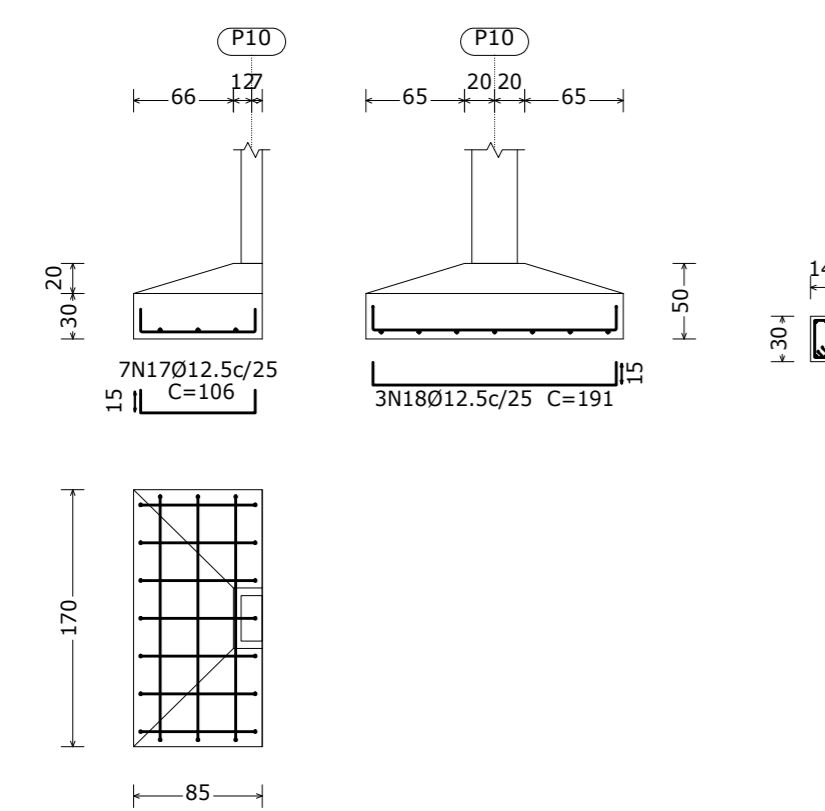
P9



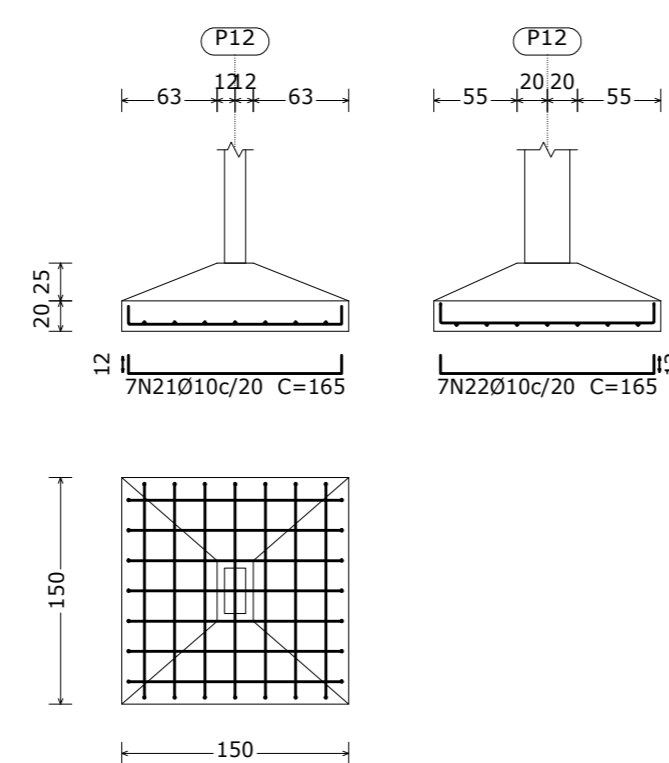
V JCS [P9 - P10]



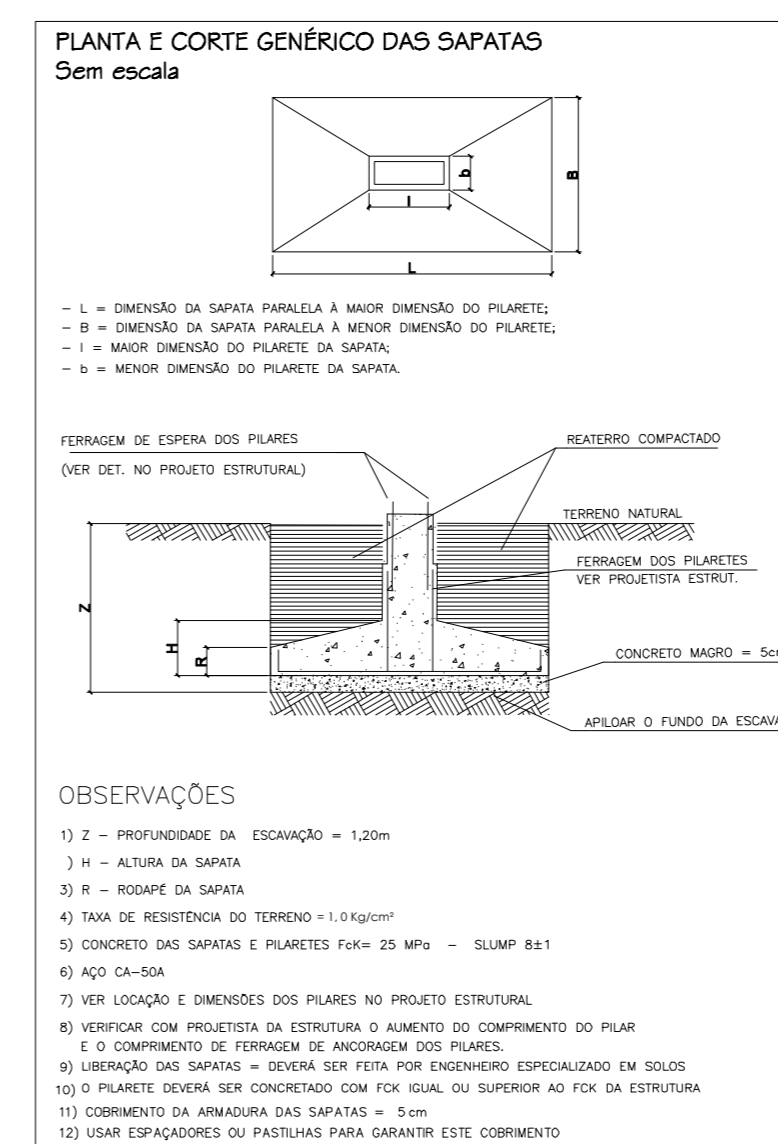
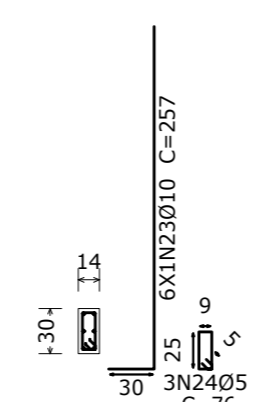
P10



P12



P12



Resumo Aço Fundação	Comp. total (m)	Peso+10% (kg)	Total
CA-50	31.9	14	
CA-60	27.4	5	
<b>Total</b>			<b>253</b>

Fundação  
Detalhamento fundação  
Concreto: C25, em geral  
Escala: 1:50

Elemento	Pos.	Diam.	Q.	Dob. Reta (cm)	Dob. Comp. (cm)	Total (cm)	CA-50 (kg)	CA-60 (kg)	
P1=P2=P3=P4=P11	1	Ø10	5	12	111	12	135	675	4.2
	2	Ø10	6	1	118	1	120	720	4.4
	3	Ø10	4	30	217		247	988	6.1
	4	Ø5	3		76		76	228	
Total+10%:							16.2	97.2	0.4
(x6):							97.2	583.2	2.4
P6=P7	5	Ø10	6	12	96	12	120	720	4.4
	6	Ø10	5	1	133	1	135	675	4.2
	7	Ø10	4	30	212		242	968	6.0
	8	Ø5	3		76		76	228	
Total+10%:							16.1	97.2	0.4
(x2):							32.2	194.4	0.8
P8	9	Ø10	7	12	141	12	165	1155	7.1
	10	Ø10	7	12	141	12	165	1155	7.1
	11	Ø10	4	30	227		257	1028	6.3
	12	Ø5	3		76		76	228	
Total+10%:							22.6	142.2	0.4
P9	13	Ø10	6	12	96	12	120	720	4.4
	14	Ø10	5	1	133	1	135	675	4.2
	15	Ø10	4	30	231		261	1044	6.4
	16	Ø5	3		76		76	228	
Total+10%:							16.1	97.2	0.4
P10	17	Ø12.5	7	15	76	15	106	742	7.1
	18	Ø12.5	3	15	161	15	191	573	5.5
	19	Ø10	4	30	231		261	1044	6.4
	20	Ø5	3		76		76	228	
Total+10%:							20.9	132.2	0.4
P12	21	Ø10	7	12	141	12	165	1155	7.1
	22	Ø10	7	12	141	12	165	1155	7.1
	23	Ø10	6	30	227		257	1542	9.5
	24	Ø5	3		76		76	228	
Total+10%:							26.1	162.2	0.4
V JCS [P9 - P10]	25	Ø8	4		338		338	1352	5.3
	26	Ø12.5	3	30	300	29	359	718	6.9
	27	Ø12.5	3	30	300	29	359	1077	10.4
	28	Ø8	13		141		141	1833	7.2
Total+10%:							32.8	204.2	0.0
							Ø5:	0.0	4.8
							Ø8:	13.8	0.0
							Ø10:	201.2	0.0
							Ø12.5:	32.9	0.0
							Total:	247.9	4.8

FOLHA	ASSUNTO
<p>OS DESENHOS E MATERIAIS QUE CONSTAM DESTA PLANTA, CONSTITUEM TRABALHOS ORIGINAIS DO ENGENHEIRO/PROJETISTA. ESTES TRABALHOS NÃO PODEM SER DUPLICADOS OU UTILIZADOS SEM O CONSENTIMENTO POR ESCRITO DO PROJETISTA.</p>	
<p>REPÚBLICA FEDERATIVA DO BRASIL ESTADO DE SANTA CATARINA MUNICÍPIO DE CAPIVARI DE BAIXO</p>	
<p><b>PROJETO ESTRUTURAL</b></p>	
Referência	Conteúdo
AMPLIAÇÃO - EI ANITA BRUNEL ALVES	(1) LOAÇÃO POR EIXO DE PILARES (2) DETALHE SAPATAS FUNDAÇÃO
<p>ÁREA DE AMPLIAÇÃO = 79,22 m²</p>	
<p>Endereço da Obra <b>RUA MANOEL VIEIRA, TRÊS DE MAIO - CAPIVARI DE BAIXO - SC</b></p>	
Assinatura	Resp. Projeto
<p>MUNICÍPIO DE CAPIVARI DE BAIXO CNPJ/MF - 95.780.441/0001-80</p>	
<p>JEAN CARDOSO DE SOUZA Eng. Civil / Tcc. em Eletroeletrônica CREA/SC - 067975-0 / CFT - BR nº 0175717494-0</p>	
Desenho	Escala
Art. Nº	Revisão
Letícia Andrade de Bem Acad. Arquitetura e Urbanismo - UDESC	INDICADA 00
Ticket Nº	Data
Folha Nº	
0000000-0	202046073
<p>0105</p>	